

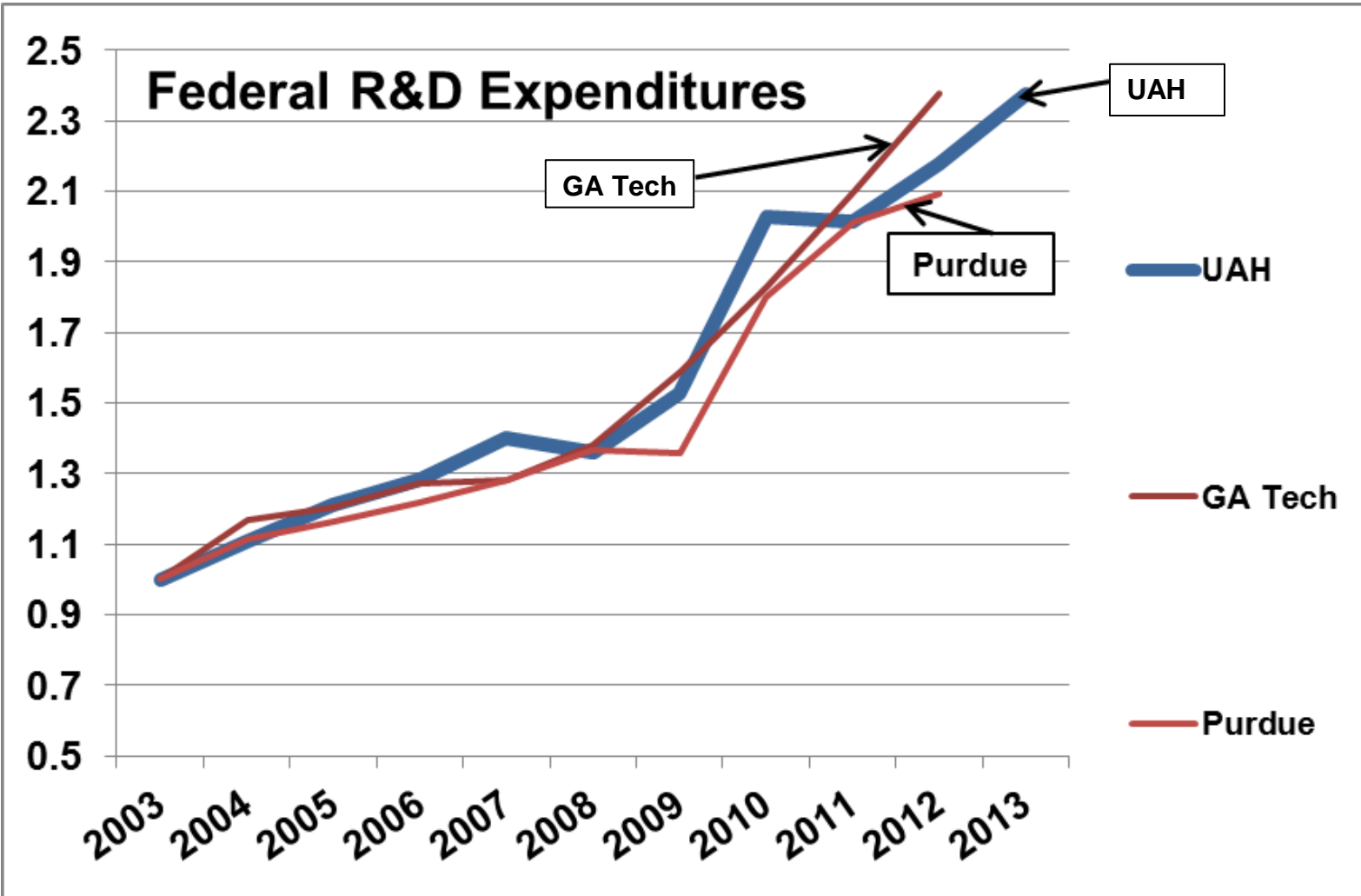


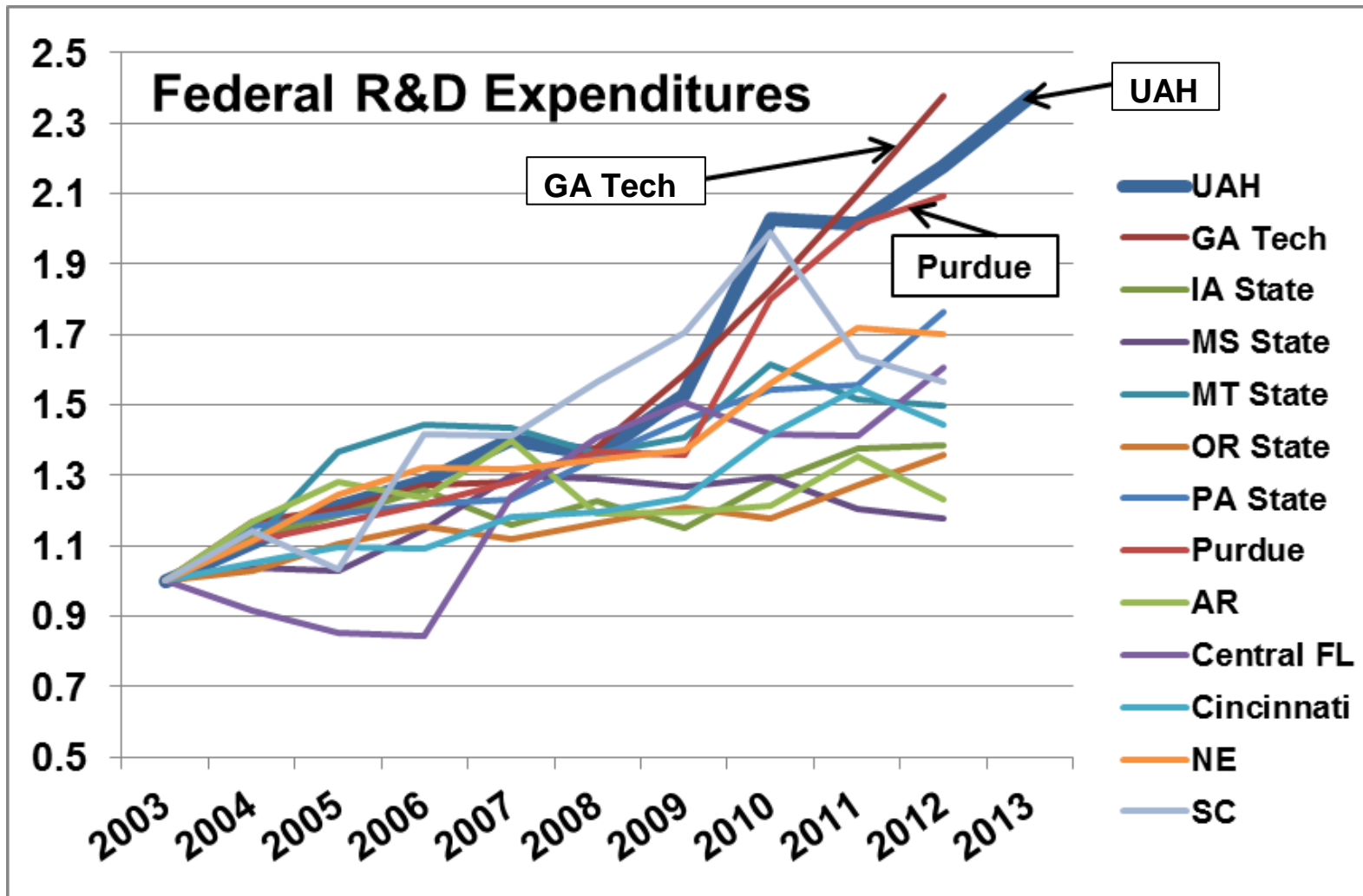
THE UNIVERSITY OF
ALABAMA IN HUNTSVILLE



- Carnegie Foundation
Basic Classification:
RU/VH (one of 73
Publics)
- FY13 Research
Expenditures: \$99.0
Million (largest in history)
- Largest research
expenditures among
publics our size

Expanding Horizons
Explore. Discover. Create







Expanding Horizons

- Aerospace & Systems Engineering
- Biotechnology
- Cybersecurity & Big Data
- Earth, Atmospheric & Space Science
- Gaming & Entertainment Arts

Expanding Horizons
Explore. Discover. Create



Strategies for undergraduate enrollment management:

- Expanded AP score acceptance
- Summer classes for first-time freshmen in the fall at the fall semester rate
- Acceptance/scholarships based on last best HSGPA and ACT
- Enhanced scholarship matrix (HSGPA & ACT)
- Block tuition (12 to 18 credit hours)
- Credit hour limit for Merit Tuition
Scholarships increased from 16 to 18 hours

MERIT TUITION SCHOLARSHIPS

- Percentages represent tuition amount awarded for first time freshmen
- You are **AUTOMATICALLY** considered for Merit Tuition Scholarships when you apply for admission
- Scholarships reassessed with new GPA and test scores

TEST SCORES	ACT	25 – 27	28 – 29	30 – 33	34 – 36
	SAT (CR+M)	1130 – 1240	1250 – 1320	1330 – 1480	1490 – 1600
HIGH SCHOOL GPA	4.0+	50%	67%	100%	100%*
	3.50 – 3.99	40%	45%	100%	100%
	3.00 – 3.49	35%	35%	45%	50%

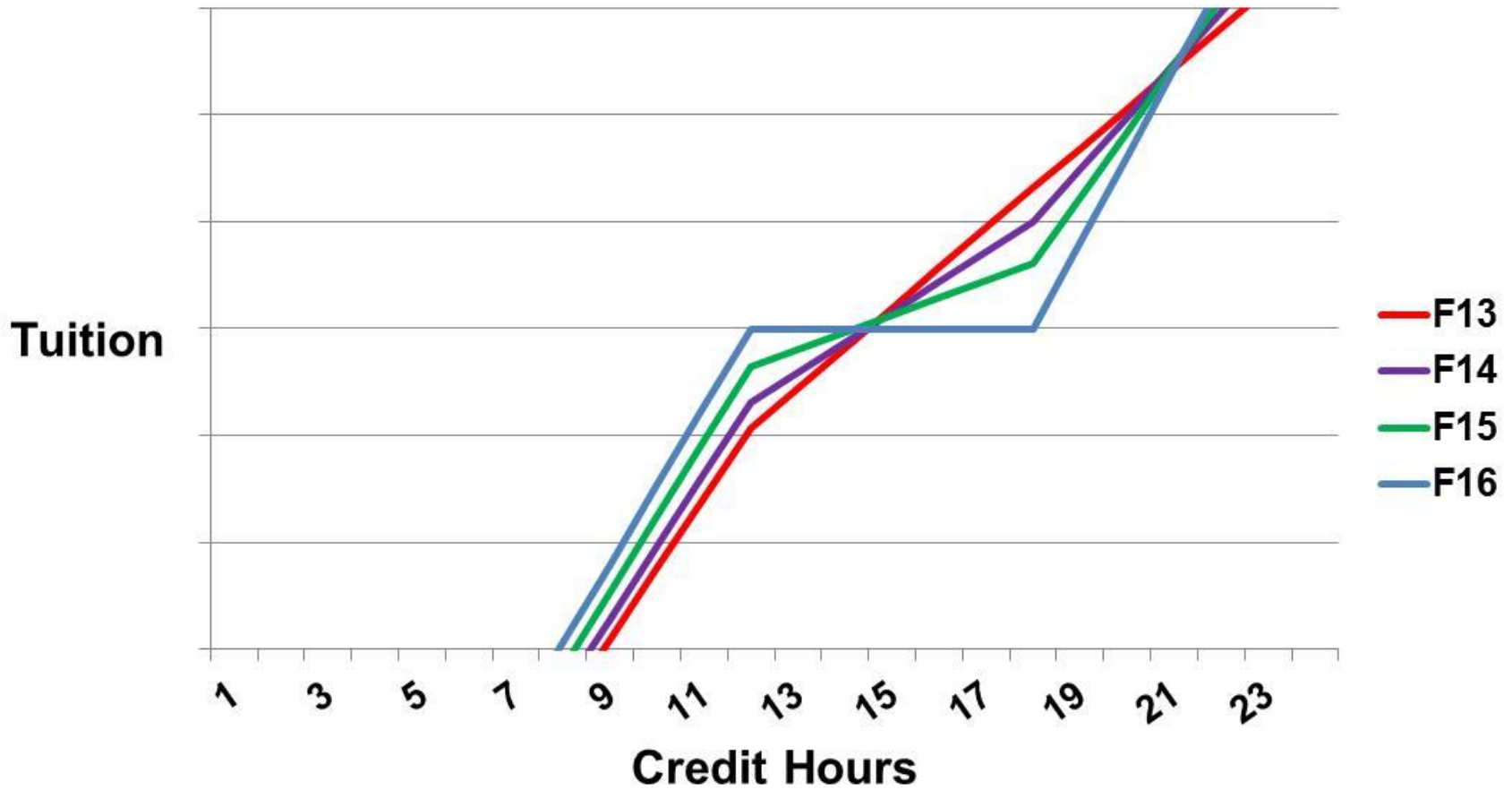
* Covers on-campus housing in addition to tuition

UG Tuition 3 Year Transition to Block 12 to 18 CrHrs



UG Tuition

3 Year Transition to Block 12 to 18 CrHrs





Strategies for undergraduate enrollment growth:

- Honors College
- New programs and majors (most in approval process)
 - Gaming
 - Secondary Education
 - Exercise Science and Physical Education
 - Theatre
- New admissions programming and messaging
- Vice President for Student Affairs
- Joined Student Success Collaborative
- College of Education/Rise School



THE UNIVERSITY OF
ALABAMA IN HUNTSVILLE

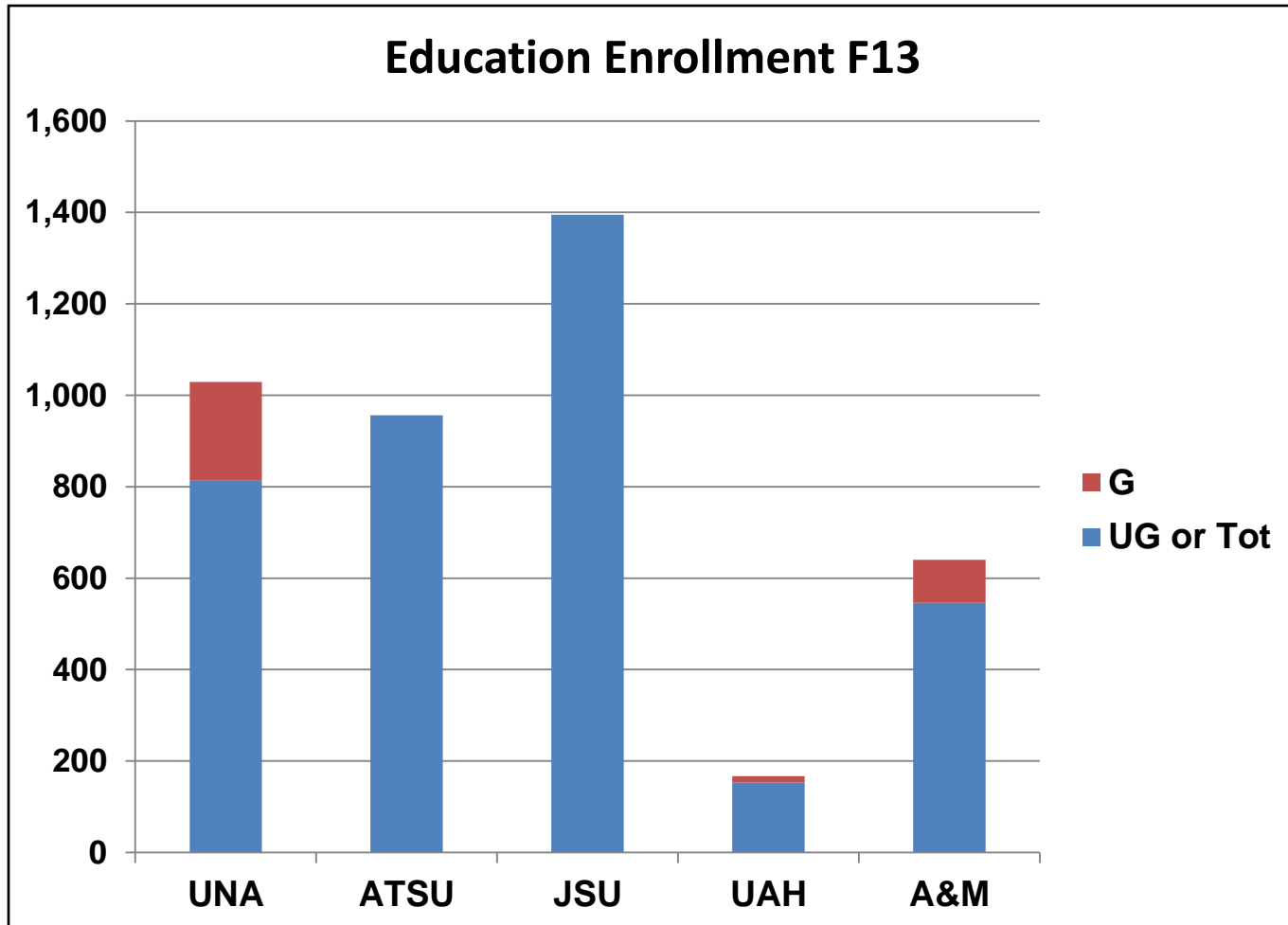


Rise School
"Where Special Kids Shine"





THE UNIVERSITY OF
ALABAMA IN HUNTSVILLE





Alabama Colleges of Education	
University	College of Education
A&M	College of Education, Humanities, and Behavioral Sciences
ASU	✓
ATSU	✓
AUB	✓
AUM	School of Education
JSU	College of Education and Professional Studies
Troy	✓
UA	✓
UAB	School of Education
UAH	X
UM	✓
UNA	College of Education and Human Sciences
USA	✓
UWA	✓
✓ = College of Education	
X = No College of Education	



College of Education

- Explored AY 13-14
- Discussed with Faculty Senate Exec Comm July 14
- Discussed with Department of Education July 14
- Decided to move forward for Sept 19 Board meeting
 - So as not to lose a year of recruiting
 - In parallel with the Rise School assimilation
- Structure
 - Department of Curriculum and Instruction
 - Department of Kinesiology
 - Exercise Science
 - Physical Education
 - UAH Rise School: an Outreach and Service Center



THE UNIVERSITY OF
ALABAMA IN HUNTSVILLE

TRAVEL	TRAVEL TIME	RECEPTION DATE
LOOP #1: Birmingham – Tuscaloosa – Mobile		
Birmingham, AL	1 hr/29 min	Tues, Oct 7
Tuscaloosa, AL	53 min	Wed, Oct 8
Mobile, AL	3 hr/27 min	Thurs, Oct 9
Huntsville, AL	4 hr/59 min	Fri, Oct 10
LOOP #2: Nashville – Chattanooga – Atlanta		
Nashville, TN	1 hr/50 min	Tues, Oct 14
Chattanooga, TN	1 hr/59 min	Wed, Oct 15
Atlanta, GA	1 hr/46 min	Thurs, Oct 16
Huntsville, AL	3 hr/10 min	Thurs, Oct 16 or Fri, Oct 17
LOOP #3: Anniston - Auburn – Montgomery – Gadsden		
Anniston, AL	1 hr/57 min	Mon, Oct 20
Auburn, AL	1 hr/47 min	Tues, Oct 21
Montgomery, AL	51 min	Wed, Oct 22
Gadsden, AL	2 hr/9 min	Thurs, Oct 23
Huntsville, AL	1 hr/25 min	Thurs, Oct 23
LOOP #4: Bowling Green – Louisville – Indianapolis		
Bowling Green, KY	2 hr/46 min	Tues, Oct 28
Louisville, KY	1 hr/49 min	Wed, Oct 29
Indianapolis, IN	1 hr/44 min	Thurs, Oct 30
Huntsville, AL	6 hr/1 min	Fri, Oct 31

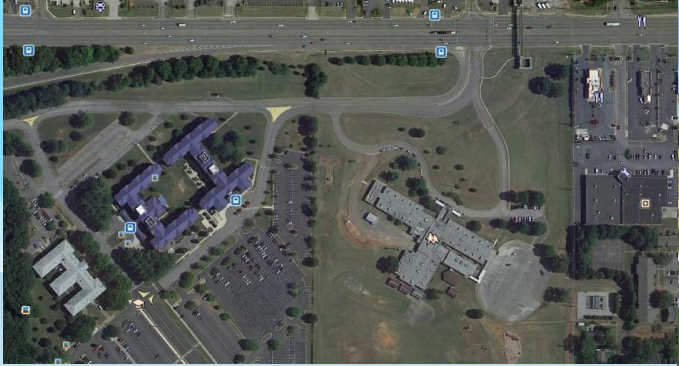
TRAVEL	TRAVEL TIME	RECEPTION DATE
LOOP #5: St. Louis – Memphis – Little Rock		
St. Louis, MO	6 hr/14 min	Tues, Nov 11
Memphis, TN	4 hr/4 min	Wed, Nov 12
Little Rock, AR	2 hr/5 min	Thurs, Nov 13
Huntsville, AL	5 hr/32 min	Fri, Nov 14
LOOP #6: Jackson – New Orleans – Baton Rouge – Houston		
Jackson, MS	4 hr/45 min	Mon, Nov 10
New Orleans, LA	2 hr/45 min	Tues, Nov 11
Baton Rouge, LA	1 hr/18 min	Wed, Nov 12
Houston, TX	4 hr	Thurs, Nov 13
Huntsville, AL	10 hr/51 min	Fri, Nov 14
LOOP #7: Knoxville – Lexington - Cincinnati		
Knoxville, TN	3 hr/14 min	Tues, Nov 18
Lexington, KY	2 hr/36 min	Wed, Nov 19
Cincinnati, OH	1 hr/20 min	Thurs, Nov 20
Huntsville, AL	5 hr/48 min	Fri, Nov 21



THE UNIVERSITY OF
ALABAMA IN HUNTSVILLE

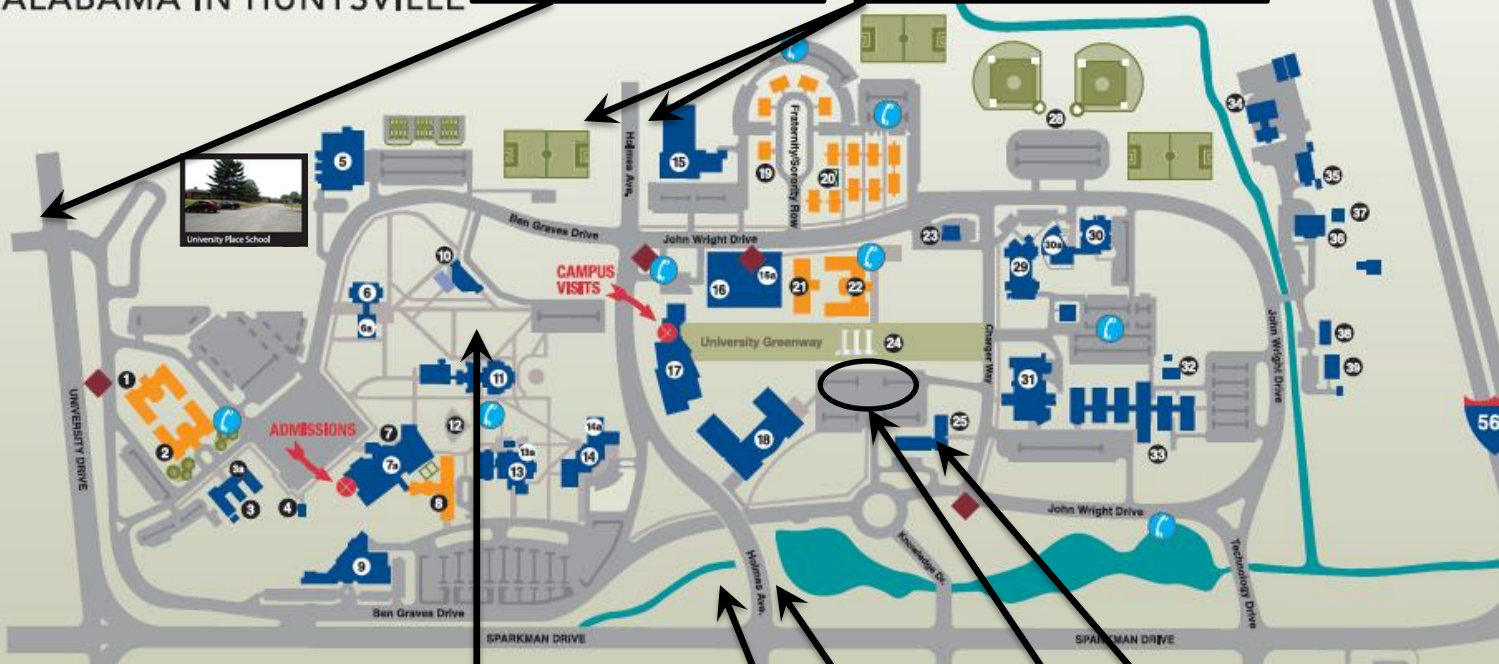


- Strategies for graduate enrollment growth:
- New programs
 - Business (SCLM, HRM, BA)
 - Education (Special Education)
 - Space Science (MS, PhD)
 - Enhanced recruiting for graduate students
 - Growing master's and doctoral programs



Univ Dr Entrance

Holmes Ave Entrance



- 1. North Campus Residence Hall
- 2. Frank Franz Hall
- 3. Morton Hall
- 3a. Studio
- 4. Union Center and Meeting Room
- 5. Spragin Hall
- 6. Roberts Hall
- 6a. Roberts Recital Hall
- 7. University Center/Admissions
- 7a. Exhibit Hall
- 8. Central Campus Residence Hall
- 9. Bevilacqua Center
- 10. Nursing Building
- 11. Salmon Library
- 12. Amphitheater
- 13. Wilson Hall
- 13a. Wilson Theatre
- 14. Business Administration Building
- 14a. Chan Auditorium
- 15. University Fitness Center
- 16. Intermodal Parking Facility
- 16a. Public Safety
- 22. Charger Village I
- 23. Credit Union
- 24. University Greenway
- 25. Madison Hall/Disability Support
- 26. Robert "Bud" Cramer Research Hall (National Space Science and Technology Center and NOAA Weather Forecast Center and NOAA Weather Forecast Center)
- 27. Future site/SWIRLL (Severe Weather Research and Lightning Laboratory)
- 28. Charger Park
- 29. Optics Building
- 30. Materials Science Building
- 30a. McDonnell Douglas Auditorium
- 40. Shelby King Hall
- 41. Olin B. King Technology Hall
- 41a. Oak Ridge-Huntsville Partnership

Greenway (II)

Madison

Holmes Ave Entrance

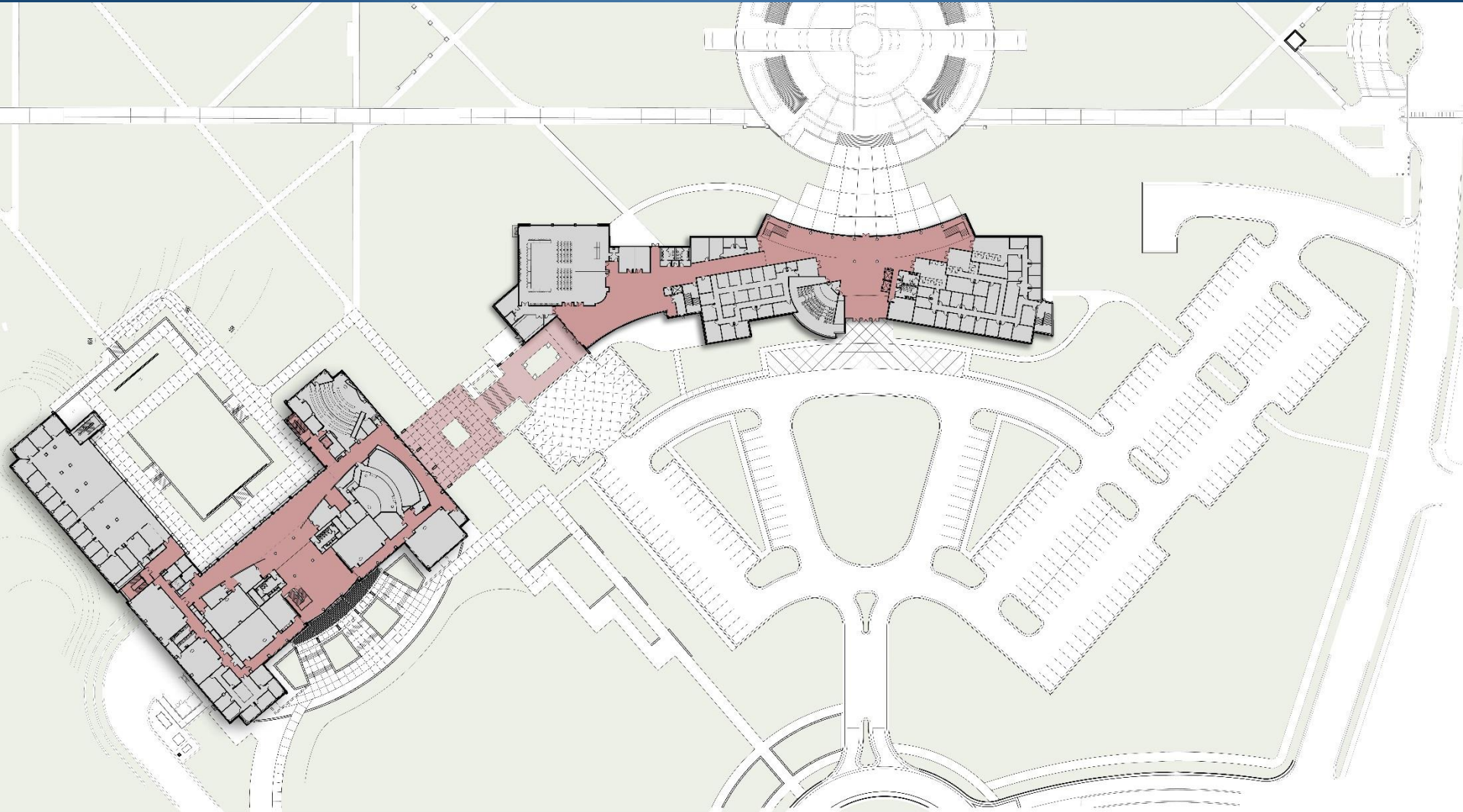


For additional information visit our website at www.uah.edu



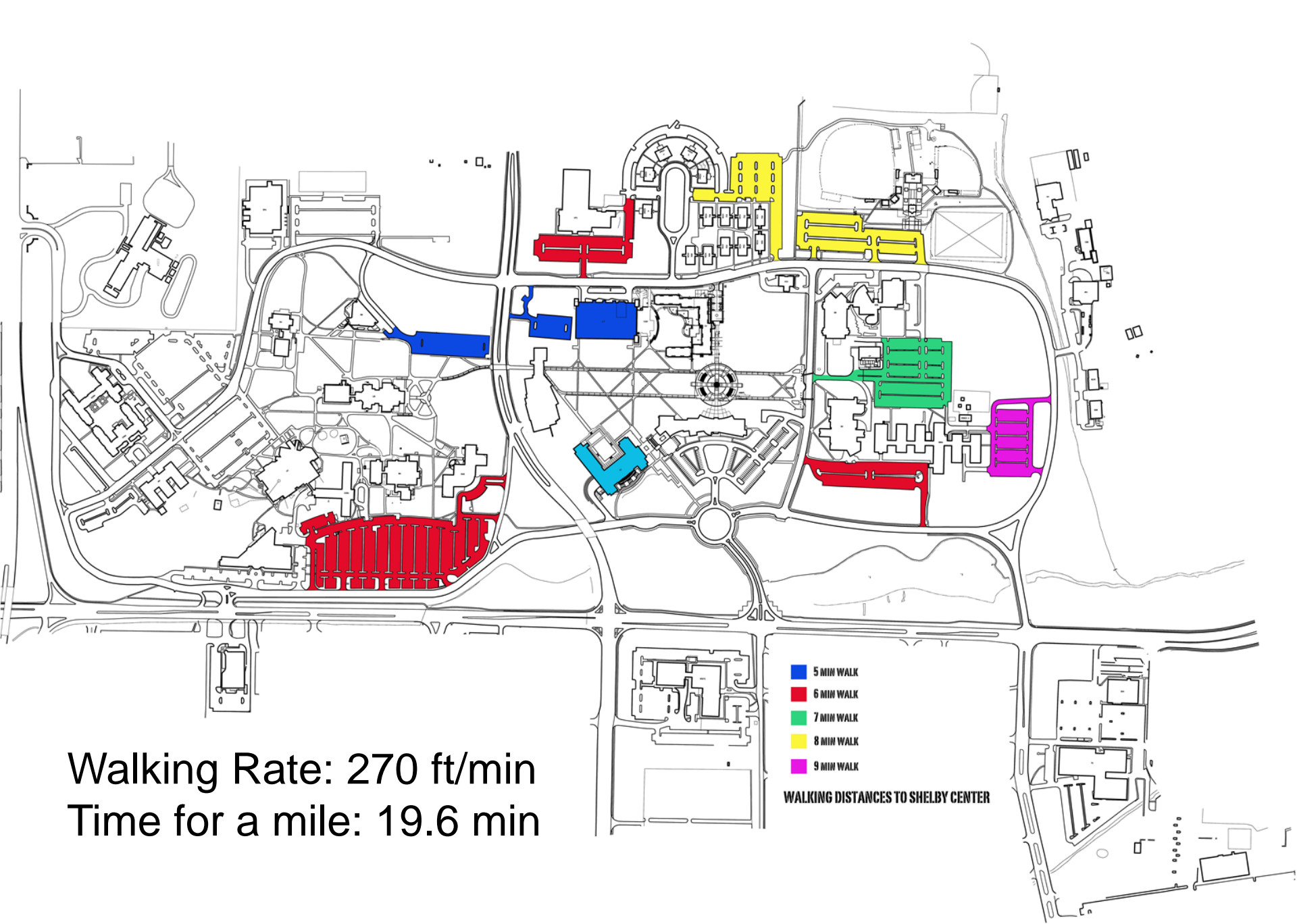






Parking Impact

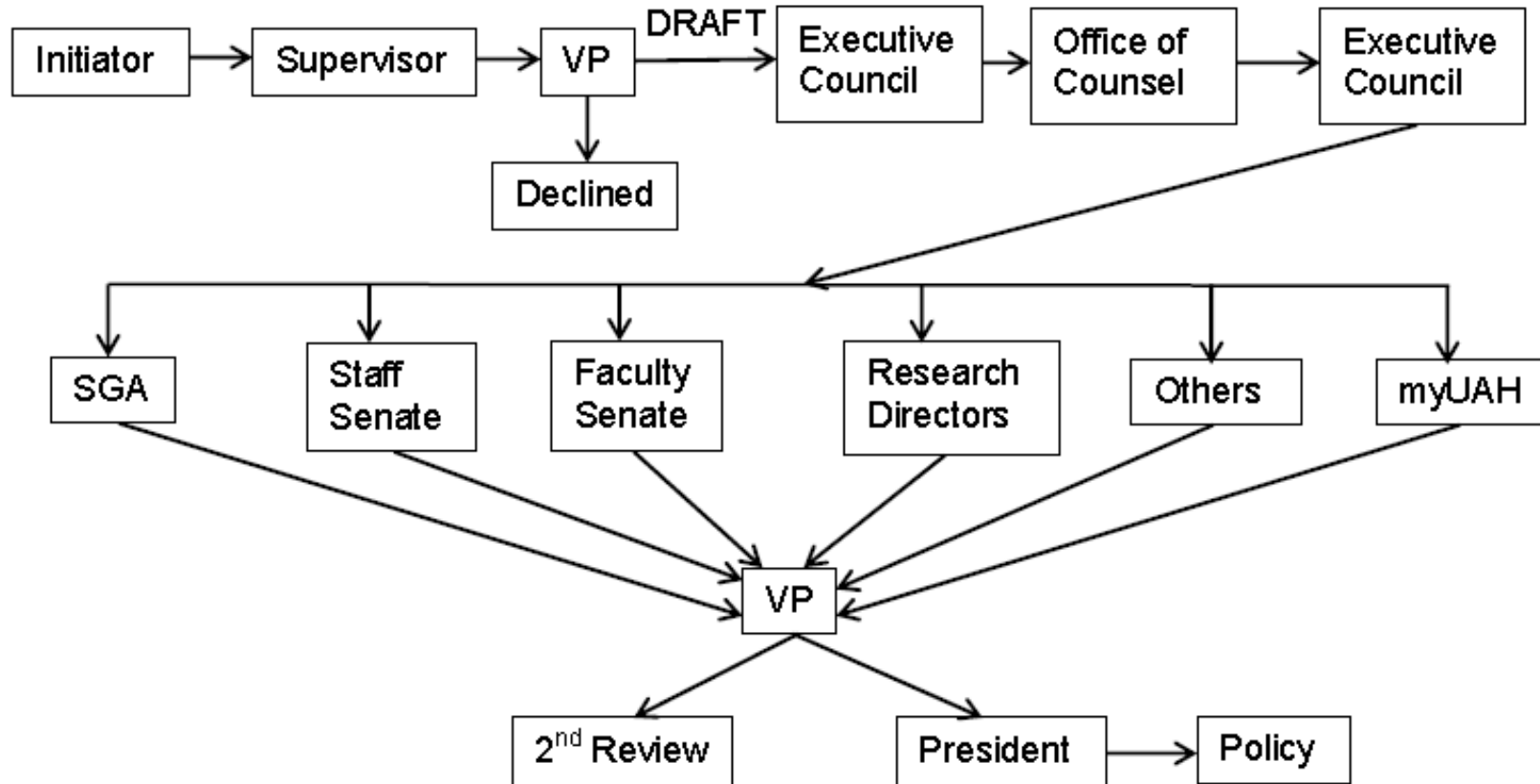
- End of July: Construction to begin on Charger Park parking lot extension (207 new spaces)
- Before Nov 15: Charger Park parking lot extension available
- Nov 15: Shelby Center/Madison Hall lot taken offline for construction (355 spaces)
- Nov 17: Start of construction of Welcome Center/Student Services Building
- Spring Semester 2016: Welcome Center/Student Services Building complete (205 spaces)
- Short Term Net: -148 spaces
- Long Term Net: +57 spaces



Walking Rate: 270 ft/min
Time for a mile: 19.6 min

- 5 MIN WALK
 - 6 MIN WALK
 - 7 MIN WALK
 - 8 MIN WALK
 - 9 MIN WALK
- WALKING DISTANCES TO SHELBY CENTER**

Policy on Policies Development Flow Diagram





UAH M&W Lacrosse Rationale

- AL high schools that play lacrosse academically strong
- Local high schools: Huntsville (M/W); Madison Academy (W); Bob Jones (M); Grissom (M); Pope John Paul II (M)
- Growing in popularity
 - Huntsville Lacrosse Assoc: 350 players
 - Greater Birmingham Lacrosse Assoc: 1,200 players
- Currently no AL state university plays lacrosse
- Several GSC institutions planning to add



Expanding Horizons

Explore. Discover. Create.