



THE UNIVERSITY OF
ALABAMA IN HUNTSVILLE

AGENDA

- Review of 2014-15
- Plans for 2015-16
- Systems Engineering
 - *Paul Collopy*, Professor and Chair, Industrial & Systems Engineering & Engineering Management
 - *Dale Thomas*, Professor and Eminent Scholar in Systems Engineering



PRIORITIES

- Broaden and expand the research portfolio
- Be a recognized leader in:
 - Aerospace and Systems Engineering
 - Biotechnology
 - Cybersecurity and Big Data
 - Earth, Atmospheric, and Space Science
 - Gaming and Entertainment Arts
- Faculty and staff recruitment and retention
- Engage more fully our stakeholders
- Student recruitment and retention

SACSCOC

- Sep-Dec, 2014 Committee Work
- Jan 20, 2015 Committee Draft Reports
- Mar 3-5, 2015 Observation Visit to TX A&M-Kingsville
- Jun 1, 2015 System Review of Draft Report
- **Sep 10, 2015 Compliance Certification Report to SACS**
- Nov 4-7, 2015 Off-site Review by SACS
- Jan 19, 2016 Focused Report and QEP to SACS
- Mar 15-17, 2016 On-site Reaffirmation Visit
- Aug 5, 2016 On-site Response Report to SACS
- Dec 6-9, 2016 SACS Annual Meeting



RECRUIT + RETAIN + GRADUATE

- Block Tuition
- Freshman Summer School Initiative
- Financial Aid
- Campus improvements
- Expanded in-state & out-of-state recruitment
- Expanded AP score acceptance
- Charger Foundations
- Division of Student Affairs (VPSA)
- Focus on retention and graduation rates
- Academic expansion/enhancement
- College Academy

Collegiate Academy Concept

Community Focus Group

November 8, 2014



HUNTSVILLE CITY
SCHOOLS

College courses in our College Academy would be taught by Faculty from the Partner College



HUNTSVILLE CITY
SCHOOLS

Freshman Year First Semester

1/30/15 Final UAH Submission		2/13/15 UAH Courses at HCS' request		2/17/15 HCS Proposed Course Sequence		2/24/15 Proposed Revised Course Sequence	
Courses	Cr Hr	Courses	Cr Hr	Courses	Cr Hr	Courses	Cr Hr
English 9 Honors				English 9 Honors		English 9 Honors	
Geometry Honors				Geometry Honors		Geometry Honors	
US History I Honors				US History I Honors		US History I Honors	
Biology Honors				Biology Honors		Biology Honors	
<i>Art History or Music</i>	<i>3</i>	<i>ARH 101, Art History or MU 100, Introduction to Music Literature</i>	<i>3</i>	<i>ARH 101, Art History or MU 100, Introduction to Music Literature</i>	<i>3</i>	<i>ARH 101, Art History or MU 100, Introduction to Music Literature</i>	<i>3</i>
Career Preparedness				Career Preparedness		Career Preparedness	

Senior Year First Semester

1/30/15 Final UAH Submission		2/13/15 UAH Courses at HCS ' Request		2/17/15 HCS Proposed Course Sequence		2/24/15 Proposed Revised Course Sequence	
Courses	Cr Hr	Courses	Cr Hr	Courses	Cr Hr	Courses	Cr Hr
<i>EH 207, Readings in Literature and Culture I</i>	3	<i>EH 207, Readings in Literature and Culture I</i>	3	<i>EH 207, Readings in Literature and Culture I</i>	3	<i>EH 207, Readings in Literature and Culture I</i>	3
<i>MA 171, Calculus A</i>	3	<i>MA 171, Calculus A</i>	3	<i>MA 171, Calculus A</i>	3	<i>MA 171, Calculus A</i>	3
Science (Options- See notes)		<i>UAH Pre-major course(at UAH)</i>	3	Science (Options-See notes)		Science (Options-See notes)	
Government (AP)				Elective		Elective	
Economics (AP)				Economics (AP)		<i>HY 103, World History to 1500</i>	3
<i>UAH Pre-major course (at UAH)</i>	3			<i>PSC 101, American Government</i>	3	<i>UAH Pre-major course (at UAH)</i>	3

Senior Year Second Semester

1/30/15 Final UAH Submission		2/13/15 UAH Courses at HCS ' Request		2/17/15 HCS Proposed Course Sequence		2/24/15 Proposed Revised Course Sequence	
Courses	Cr Hr	Courses	Cr Hr	Courses	Cr Hr	Courses	Cr Hr
<i>EH 208, Readings in Literature and Culture I</i>	3	<i>EH 208, Readings in Literature and Culture I</i>	3	<i>EH 208, Readings in Literature and Culture I</i>	3	<i>EH 208, Readings in Literature and Culture I</i>	3
<i>MA 172, Calculus B or Computer Programming, or Statistics(at UAH)</i>	3	<i>MA 172, Calculus B or Computer Programming, or Statistics (at UAH)</i>	3	<i>MA 172, Calculus B or Computer Programming, or Statistics (at UAH)</i>	3	<i>MA 172, Calculus B or Computer Programming, or Statistics (at UAH)</i>	3
<i>PY 101, General Psychology or SOC 100, Introduction to Sociology</i>	3			Science (Options - See notes)		Science (Options – See notes)	
Government (AP)				Elective		Elective	
Economics (AP)			3	Economics (AP)	3	<i>HY 104, World History to 1500</i>	3
Elective		<i>UAH Pre-major course (at UAH)</i>	3	<i>UAH Pre-major course (at UAH)</i>	3	<i>UAH Pre-major course (at UAH)</i>	3
				Elective		Elective	
College Academy Prep				College Academy Prep		College Academy Prep	

2016–2017 MERIT TUITION SCHOLARSHIPS

TEST SCORES	ACT	25 – 27	28 – 29	30 – 33	34 – 36
	SAT (CR+M)	1130 – 1240	1250 – 1320	1330 – 1480	1490 – 1600
HIGH SCHOOL GPA	4.0+	50%	67%	100%	100%*
	3.50 – 3.99	40%	45%	100%	100%
	3.00 – 3.49	35%	35%	45%	50%

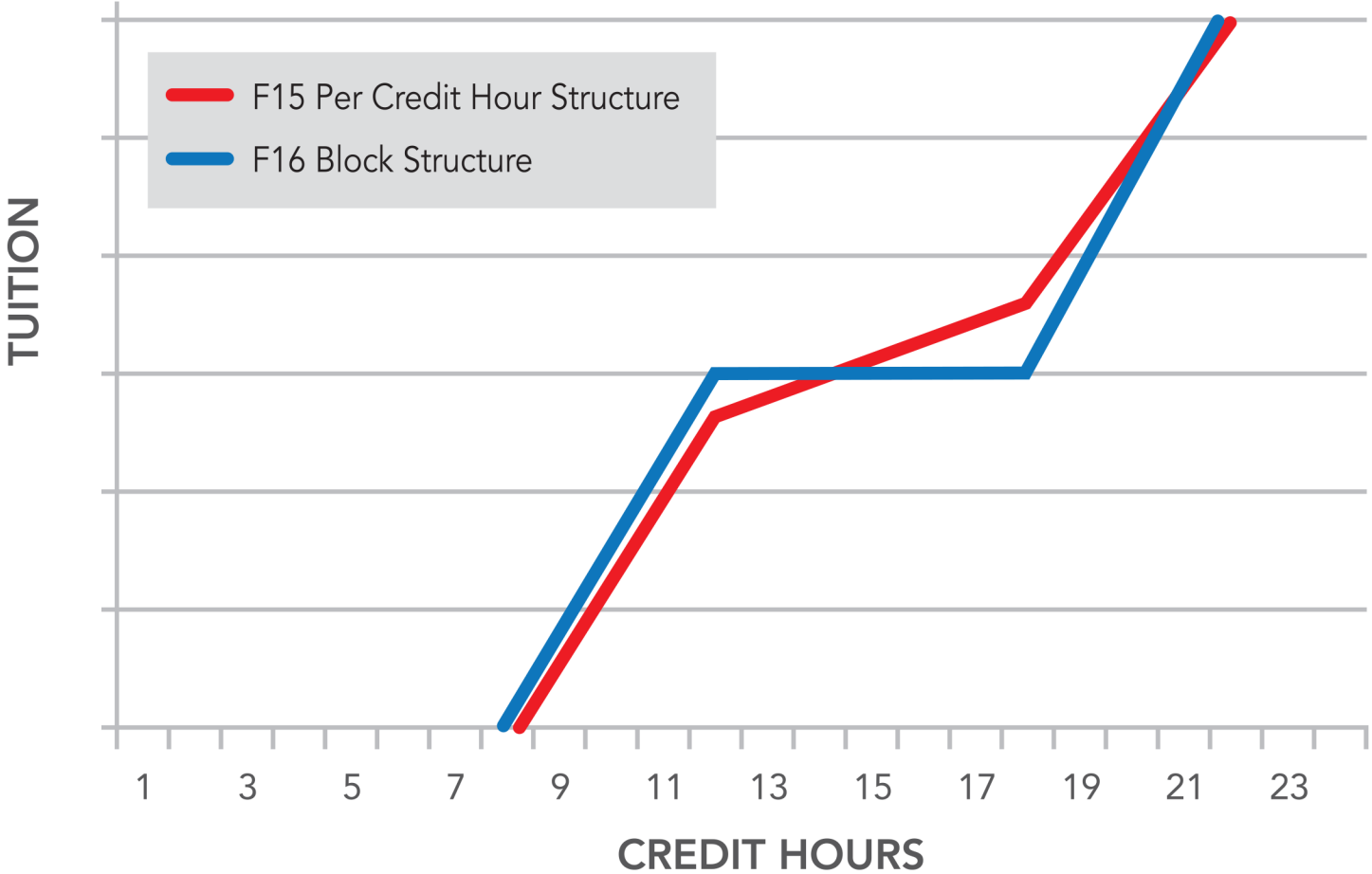
* Covers on-campus housing in addition to tuition

SCHOLARSHIPS

Merit Tuition and Competitive Scholarships available.



UNDERGRADUATE TUITION TRANSITION TO BLOCK 12 – 18 CREDIT HOURS

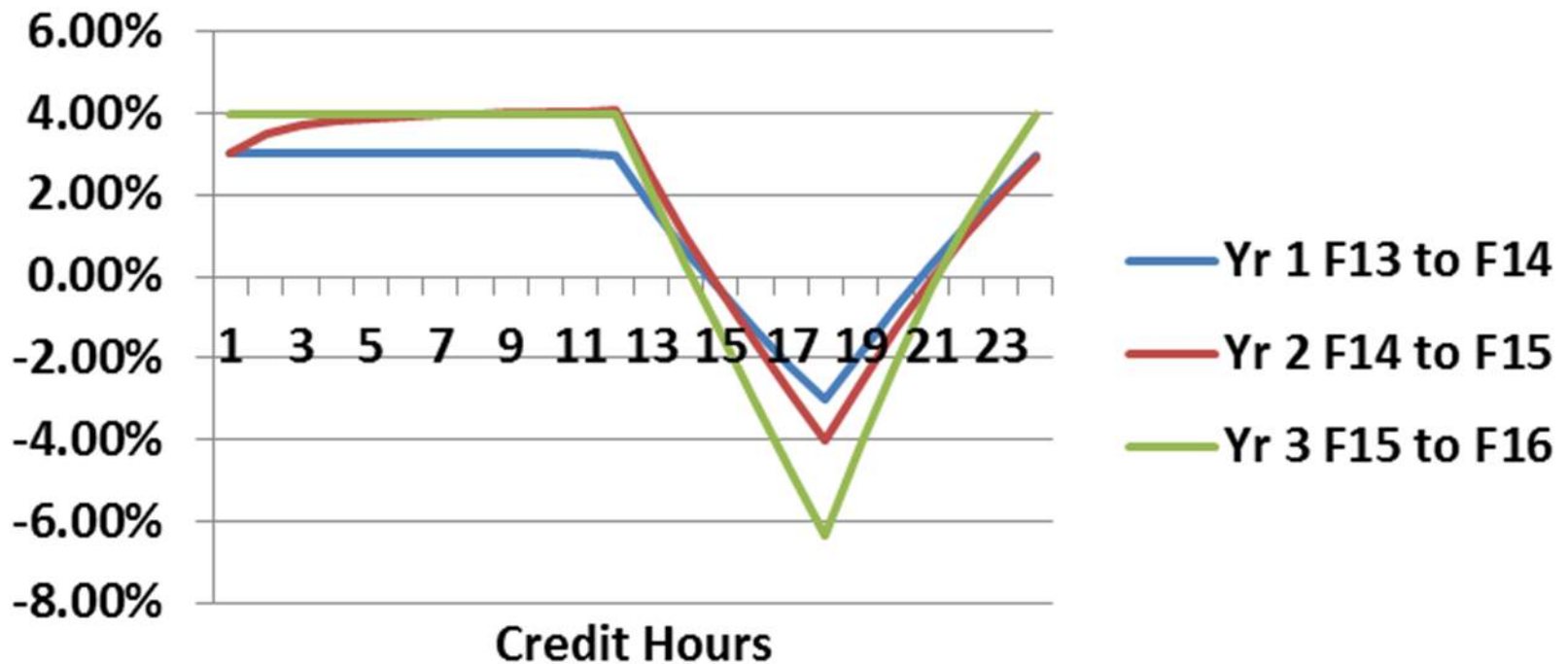


SCHOLARSHIPS

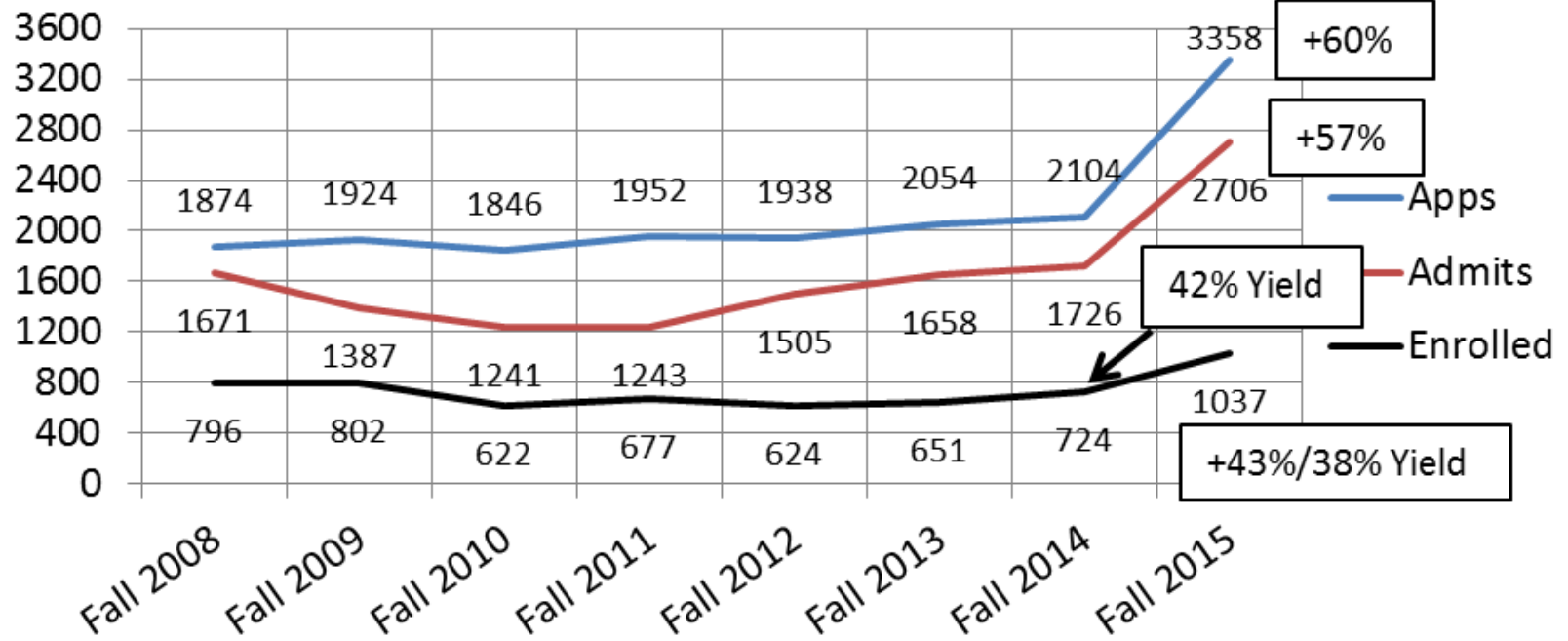
Block tuition begins Fall 2016 for 12-18 credit hours.

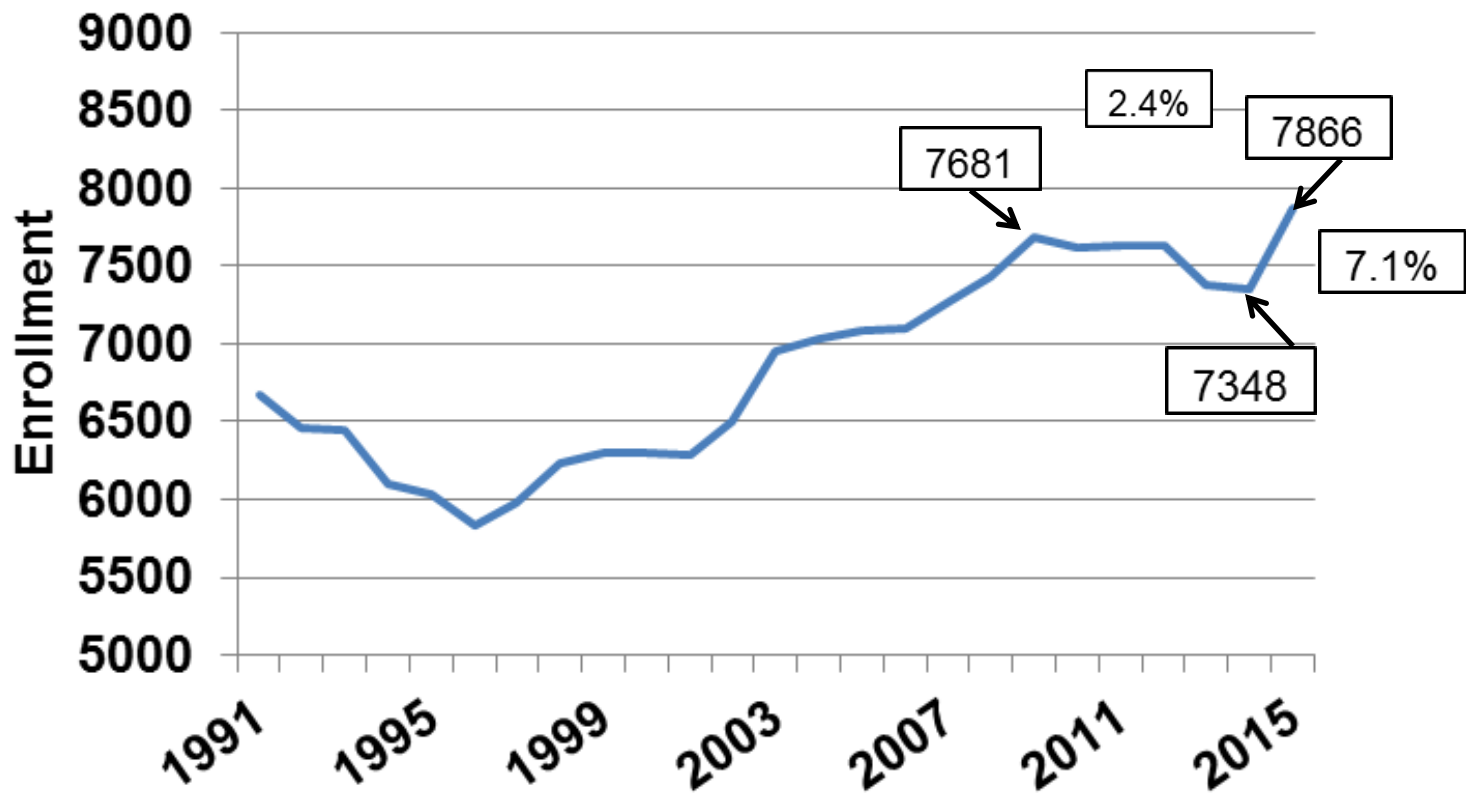


% Tuition Δ s in Transition to Block Tuition (UG Instate)



Freshmen Fall 2015 (Final)



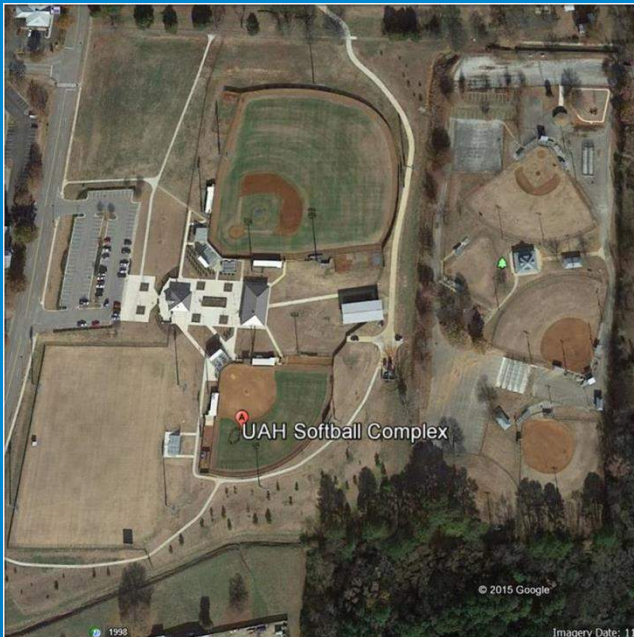




PROGRAMMATIC 2014-15

- Division of Student Affairs
- Honors College
- College of Education
 - BS Kinesiology
 - BS Secondary Education
 - BS Education (Early Childhood/Special Education)
 - MA Teaching
 - UAH Rise School
- MS/PhD Space Science
- BA Theatre
- MS SCLM, MS Business Analytics, MS Human Resource Mgt
- Arts, Humanities, & Social Sciences
- Center for Cybersecurity Research and Education
- Davidson Cybersecurity Laboratory

CAMPUS ENHANCEMENT 2014-15



CAMPUS ENHANCEMENT 2014-15



2015-16

- SACSCOC
- Retention/graduation
- BA Writing
- Bachelor of Professional Studies
- University Place School
- University Park
- College Academy
- Grants/contracts
 - 2015 highest proposal submission since 2010 (150% of 2010 through Q3)
- Campus Master Plan

2015-16

- Enhanced/Expanded Recruiting
 - Close to current recruiting locations (GA, TN, KY, OH, NC, SC, MO, MS)
 - Close to NASA/Military
 - High in-state tuition states
 - Zip code analysis
 - Student growth states
 - Students-without-a-presence states
 - Alumni/current students



Student Services Building Construction



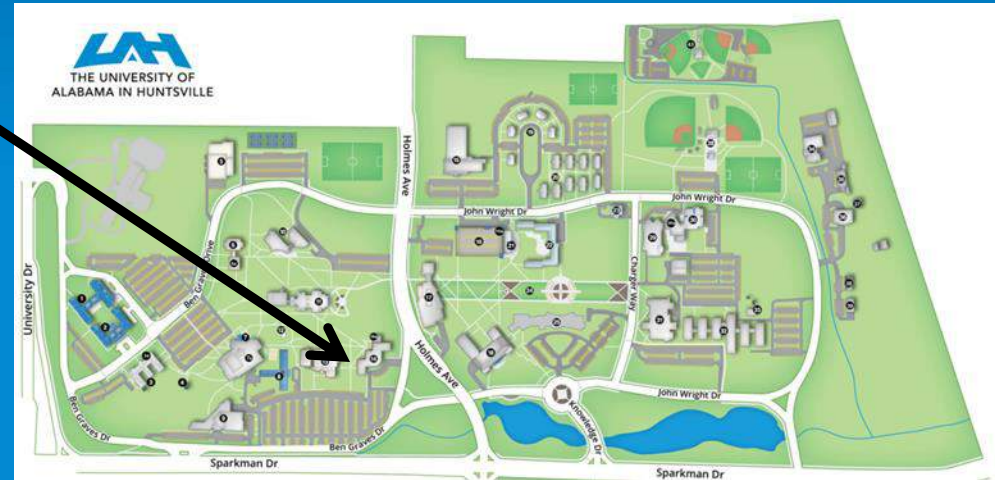
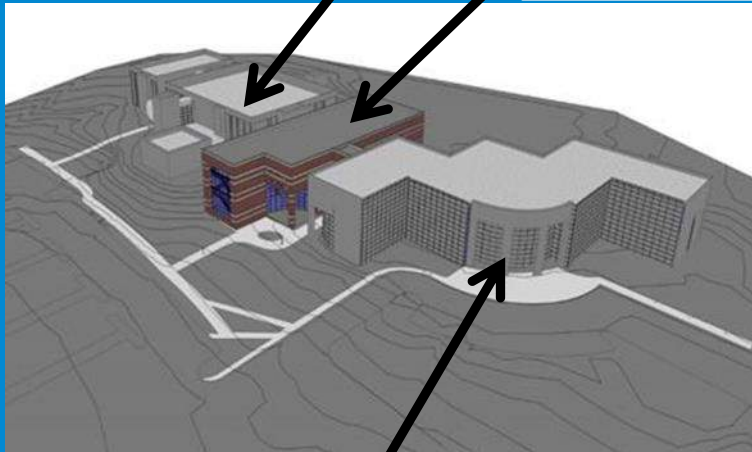
Coming Spring 2016 — Student
Services Building



UAH INCUBATOR

Wilson Hall

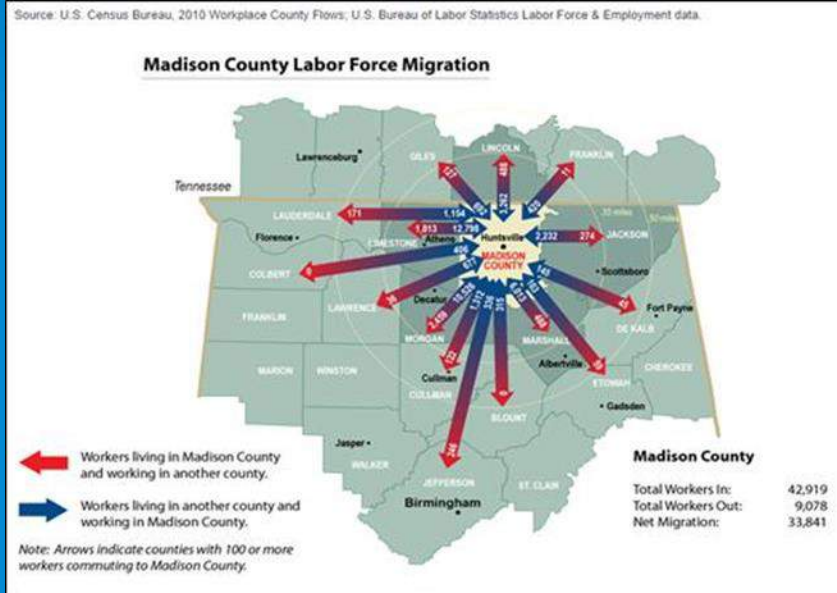
Incubator



Business Administration



A UAH INCUBATOR



- 43,000 residents from 15 counties
- Redstone has more patents applied for and issued than any other entity in the SE US
 - DoD's mission focused on warfighter; commercialization not a priority
 - No N AL ecosystem for identifying dual use technologies

- UAH has
 - Small Business Development Center
 - Office of Technology Commercialization
 - Opportunity/ability to leverage regional assets



CHARGER ATHLETICS

New this spring – men's and women's lacrosse!

UAH
THE UNIVERSITY OF
ALABAMA IN HUNTSVILLE



THE UNIVERSITY OF
ALABAMA IN HUNTSVILLE